



Socket Technology

Issue 18



endolite

A Blatchford Company

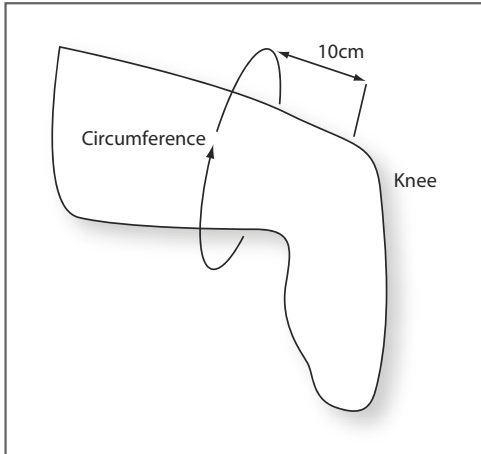
Contents

Guide to Measurements	4
Silicone Liners	
Silcare Breathe Liner - Cushion	5
Silcare Breathe Liner - Locking	5
Spare Parts	6
Endolite Comfort Liner - Cushion	7
Endolite Comfort Liner - Locking	7
Endolite Parasil Liner	8
Orliman Soft Silicone Tibial Liner With Pin	9
Alps Gel Liners	
Alps Gel Superior Performance Locking Liner – SPDT	10
Alps Superior Performance Locking Liner High Density - SPDTHD	10
Alps Gel Superior Performance Cushion Liner - SPFR	11
Alps Superior Performance Cushion Liner High Density - SPFRHD	11
Alps Anterior Posterior Tapered Locking Liner – APDT	12
Alps Anterior Posterior Tapered Cushion Liner – APFR	12
Alps Easyliner™ Locking Liner – ELDT	13
Alps Easyliner™ Non-Locking Liner - ELFR	13
Alps EZ Flex Locking Liner - EZF	14
Alps General Purpose Liner - GPDT/GPFR	14
Alps Extreme Liner – AKDT/AKFR	15
Alps Extreme Liner High Density – AKDTHD	15
Alps Easyliner™ Super Stretch - ELPX	16
Alps Thermoliner™ Locking Liner - TFDT	16
Alps Thermoliner™ Non-Locking Liner - TFFR	17
Alps ECO Gel Liner – ECDTHD/ECFRHD	17
Gel Suspension Sleeves	
Alps Valve Integrated Vacuum Activated - VIVA	18
Alps EasySleeve™ Fabric Reinforced - SFR	18
Alps EasySleeve™ Fabric Reinforced - SFS	19
Alps Suspension Sleeve – SFB	19
Alps Flex Sleeve - SFX	20
Alps Extreme Sleeve Fabric Reinforced - SFK	20
Alps EasySleeve™ Super Stretch - SLE	21
Silicone Suspension Sleeves	
Alps Clearline Sleeve - SLR	21
Other Suspension Sleeves	
Endolite TT Suspension Sleeve	22
Endolite 3D Knitted Sleeve	22
Locks and Valves	
Valves and Accessories	23
Endolite Socket Locks and Valves	23
Accessories	
Alps PadSil Silicone Distal Pads - PDS	24
Skincare	
Alps Skin Lotion	24
Alps Prosthetic Lubricant	25
Alps Prosthetic Cleanser	25
Warranty Periods	27

Guide to Measurements

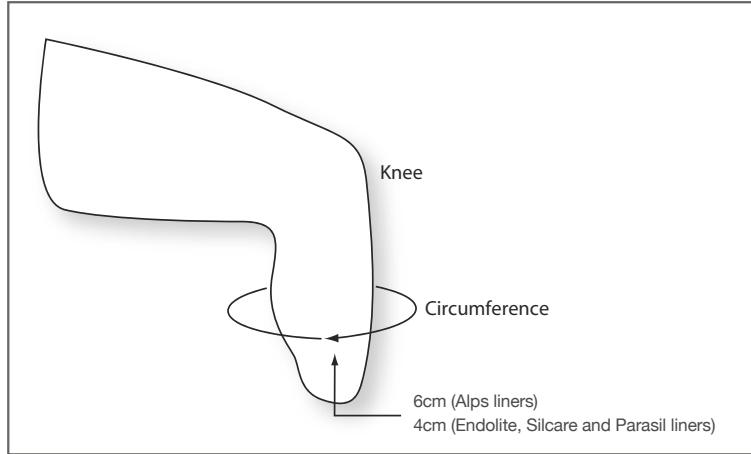
Suspension Sleeves

How to size, measurements taken 10cm above patella.



Liners

How to size, measurements taken 4cm or 6cm from the distal end, depending on liner brand as shown.



Silcare Breathe Liner - Cushion



Silcare Breathe Liner - Locking



The patented technology of Silcare Breathe works by letting the air and perspiration that are often trapped between the liner and skin to escape through specially designed laser drilled perforations. The air and moisture are then expelled from the socket as the wearer walks, resulting in drier skin and a healthier environment for the residual limb. This helps to increase comfort and control, and reduce the damaging effects of relative motion on damp tissues that is often encountered with standard prosthetic liners.

- Trans-tibial
- Laser perforations distributed uniformly along the length and distal end to permit escape of air and moisture
- Seamless bi-directional stretch to improve comfort and contouring. Shear forces on the knee are reduced as it flexes
- Tendresse™ finish reduces shear stress on the skin
- Use with a one-way valve helps to generate a better vacuum and more secure fit
- 6 month warranty

- Trans-tibial
- Laser perforations distributed uniformly along the length and distal end to permit escape of air and moisture
- Locking system and unique one way valve create an airtight seal between the skin and the inner surface of the liner. No separate suspension sleeve is required contributing to a cooler environment for skin and a more comfortable limb and socket connection
- Uni-directional stretch at the distal end resists pistoning whilst bi-directional stretch at the proximal end allows for comfortable knee flexion
- Tendresse™ finish reduces shear stress on the skin
- 6 month warranty

Part number:

SBTTCPXXL Silcare Breathe Cushion

XX indicates size, see sizing chart and illustrations for details

Sizing chart

measurements taken 4cm from the distal end

*Please choose next size down if your measurement is exact

Measured Size (cm)

Measured Size (cm)	Part Number	Description
22cm	SBTTCP22L	Silcare Breathe 22
23.5cm	SBTTCP23L	Silcare Breathe 23.5*
25cm	SBTTCP25L	Silcare Breathe 25
26.5cm	SBTTCP26L	Silcare Breathe 26.5*
28cm	SBTTCP28L	Silcare Breathe 28
30cm	SBTTCP30L	Silcare Breathe 30
32cm	SBTTCP32L	Silcare Breathe 32
34cm	SBTTCP34L	Silcare Breathe 34
36cm	SBTTCP36L	Silcare Breathe 36
40cm	SBTTCP40L	Silcare Breathe 40

*note- 23.5 = SBTTCP23L , 26.5 = SBTTCP26L

Part number:

SBTTLPXXL Silcare Breathe Locking

XX indicates size, see sizing chart and illustrations for details

Sizing chart

measurements taken 4cm from the distal end

*Please choose next size down if your measurement is exact

Measured Size (cm)

Measured Size (cm)	Part Number	Description
22cm	SBTTLP22L	Silcare Breathe Locking 22
23.5cm	SBTTLP23L	Silcare Breathe Locking 23.5*
25cm	SBTTLP25L	Silcare Breathe Locking 25
26.5cm	SBTTLP26L	Silcare Breathe Locking 26.5*
28cm	SBTTLP28L	Silcare Breathe Locking 28
30cm	SBTTLP30L	Silcare Breathe Locking 30
32cm	SBTTLP32L	Silcare Breathe Locking 32
34cm	SBTTLP34L	Silcare Breathe Locking 34
36cm	SBTTLP36L	Silcare Breathe Locking 36
40cm	SBTTLP40L	Silcare Breathe Locking 40

*note- 23.5 = SBTTLP23L , 26.5 = SBTTLP26L

Valves and accessories recommended for use with Silcare Breathe can be found on page 23.

Silcare Breathe Locking Liner Spare Parts

Valve Kits



Part number	Size
559015	Small (Size 22, 23.5, 25cm)
559016	Medium (Size 26.5, 28cm)
559017	Large (Size 30, 32, 34cm)
559018	Extra Large (size 36, 40cm)

Casting Dummy Kit



Part number
599019

Silicone Liners

Endolite Comfort Liner - Cushion



Endolite Comfort Liner - Locking



Endolite Comfort Liners with design features that reduce shear forces within the socket and result in greater comfort and a safer skin environment at the interface. A unique nylon and lycra cover utilises special knitting technology to offer integrated stretch zones which allow comfortable knee flexion but maintain suspension and control piston effect in the locking liner. The size specific end pads and unique umbrella form enable full liner inversion for precise donning.

- Seamless bi-directional stretch to improve comfort and contouring
- Tendresse™ finish reduces shear stress on the skin
- 6 month warranty

- Pin lock version suitable for a variety of lock and pin preferences
- Stabilising external matrix with integrated stretch zones
- Tendresse™ finish reduces shear stress on the skin
- 6 month warranty

Part number:

CTTCPXXL Comfort - Cushion

XX indicates size, see sizing chart and illustrations for details

Part number:

CTTLPXXL Comfort - Locking

XX indicates size, see sizing chart and illustrations for details

Sizing chart

measurements taken 4cm from the distal end

*Please choose next size down if your measurement is exact

Measured Size (cm)

Measured Size (cm)	Part Number	Description
22cm	CTTCP22L	COMFORT - CUSHION 22
23.5cm	CTTCP23L	COMFORT - CUSHION 23.5
25cm	CTTCP25L	COMFORT - CUSHION 25
26.5cm	CTTCP26L	COMFORT - CUSHION 26.5
28cm	CTTCP28L	COMFORT - CUSHION 28
30cm	CTTCP30L	COMFORT - CUSHION 30
32cm	CTTCP32L	COMFORT - CUSHION 32
34cm	CTTCP34L	COMFORT - CUSHION 34
36cm	CTTCP36L	COMFORT - CUSHION 36
40cm	CTTCP40L	COMFORT - CUSHION 40

Sizing chart

measurements taken 4cm from the distal end

*Please choose next size down if your measurement is exact

Measured Size (cm)

Measured Size (cm)	Part Number	Description
22cm	CTTLP22L	COMFORT - TT LOCKING 22
23.5cm	CTTLP23L	COMFORT - TT LOCKING 23.5
25cm	CTTLP25L	COMFORT - TT LOCKING 25
26.5cm	CTTLP26L	COMFORT - TT LOCKING 26.5
28cm	CTTLP28L	COMFORT - TT LOCKING 28
30cm	CTTLP30L	COMFORT - TT LOCKING 30
32cm	CTTLP32L	COMFORT - TT LOCKING 32
34cm	CTTLP34L	COMFORT - TT LOCKING 34
36cm	CTTLP36L	COMFORT - TT LOCKING 36
40cm	CTTLP40L	COMFORT - TT LOCKING 40

*note- 23.5 = CTTCP23L , 26.5 = CTTCP26L

*note- 23.5 = CTTLP23L , 26.5 = CTTLP26L

Silicone Liners

Endolite Parasil Liner



Endolite Parasil liner combines a sleek, glide-on surface texture for ease of donning and doffing, with a stabilising matrix, which effectively minimises pistoning. It offers moderate to high activity users good cushioning and a stable interface between residual limb and socket.



- Locking and cushion distal options
- 2.5mm to 5mm wall thickness
- Glide surface: easy to don and doff
- Stabilising Matrix
- 6 month warranty

Part number:

3020L-XX Parasil Locking Liner

XX indicates size, see sizing chart and illustrations for details

Sizing chart measurements taken 4cm from the distal end

Measured Size (cm)

Measured Size (cm)	Part Number	Description
18cm	3020L-18	Parasil Locking Liner, 18
20cm	3020L-20	Parasil Locking Liner, 20
22cm	3020L-22	Parasil Locking Liner, 22
23.5cm	3020L-23.5	Parasil Locking Liner, 23.5
25cm	3020L-25	Parasil Locking Liner, 25
26.5cm	3020L-26.5	Parasil Locking Liner, 26.5
28cm	3020L-28	Parasil Locking Liner, 28
30cm	3020L-30	Parasil Locking Liner, 30
32cm	3020L-32	Parasil Locking Liner, 32
34cm	3020L-34	Parasil Locking Liner, 34
36cm	3020L-36	Parasil Locking Liner, 36

Part number:

3020C-XX Parasil Cushion Liner

XX indicates size, see sizing chart and illustrations for details

Sizing chart measurements taken 4cm from the distal end

Measured Size (cm)

Measured Size (cm)	Part Number	Description
18cm	3020C-18	Parasil Cushion Liner, 18
20cm	3020C-20	Parasil Cushion Liner, 20
22cm	3020C-22	Parasil Cushion Liner, 22
23.5cm	3020C-23.5	Parasil Cushion Liner, 23.5
25cm	3020C-25	Parasil Cushion Liner, 25
26.5cm	3020C-26.5	Parasil Cushion Liner, 26.5
28cm	3020C-28	Parasil Cushion Liner, 28
30cm	3020C-30	Parasil Cushion Liner, 30
32cm	3020C-32	Parasil Cushion Liner, 32
34cm	3020C-34	Parasil Cushion Liner, 34
36cm	3020C-36	Parasil Cushion Liner, 36

Silicone Liners

Orliman Soft Silicone Tibial Liner With Pin



- Manufactured in medical Grade Silicone.
- Matrix of 10 cm to stabilise the distal soft tissues.
- Distal umbrella designed to distribute the forces over the entire surface. Universal screwed orifice that allows it to be adapted to all kinds of suspension systems. (Shuttle locks).
- 6 month warranty

Part number:

LI1001-XX

XX indicates size, see sizing chart and illustrations for details

Sizing chart measurements taken 10cm from the distal end

Measured Size (cm)

	Part Number	Description
20cm	LI1001-20	ORLIMAN SOFT SILICONE PIN LINER 20
22cm	LI1001-22	ORLIMAN SOFT SILICONE PIN LINER 22
23.5cm	LI1001-23.5	ORLIMAN SOFT SILICONE PIN LINER 23.5
25cm	LI1001-25	ORLIMAN SOFT SILICONE PIN LINER 25
26.5cm	LI1001-26.5	ORLIMAN SOFT SILICONE PIN LINER 26.5
28cm	LI1001-28	ORLIMAN SOFT SILICONE PIN LINER 28
30cm	LI1001-30	ORLIMAN SOFT SILICONE PIN LINER 30
32cm	LI1001-32	ORLIMAN SOFT SILICONE PIN LINER 32
34cm	LI1001-34	ORLIMAN SOFT SILICONE PIN LINER 34
36cm	LI1001-36	ORLIMAN SOFT SILICONE PIN LINER 36
38cm	LI1001-38	ORLIMAN SOFT SILICONE PIN LINER 38
40cm	LI1001-40	ORLIMAN SOFT SILICONE PIN LINER 40

Gel Liners

Alps Gel Superior Performance Locking Liner SPDT



- Black High Performance Fabric for less stretch
- Wider distal end for ease of donning
- Distal ends proportionate to the size of liner
- Offered in GripGel or High Density Gel
- Offered in 3mm and 6mm uniform thicknesses
- 12 month warranty

Part number:

SPDT-XX-3 Superior Performance Locking Liner, 3mm
SPDT-XX-6 Superior Performance Locking Liner, 6mm
 XX indicates size, see sizing chart and illustrations for details

Sizing chart
 measurements taken 6cm from the distal end

Measured Size (cm)	3mm	6mm
16-19cm	SPDT16-3	SPDT16-6
20-23cm	SPDT20-3	SPDT20-6
24-25cm	SPDT24-3	SPDT24-6
26-27cm	SPDT26-3	SPDT26-6
28-31cm	SPDT28-3	SPDT28-6
32-37cm	SPDT32-3	SPDT32-6
38-43cm	SPDT38-3	SPDT38-6
44-53cm	SPDT44-3	SPDT44-6

*Please refer the the Alps website for further details.

Alps Gel Superior Performance Cushion Liner SPFR



- Black High Performance Fabric for less stretch
- Wider distal end for ease of donning
- Distal ends proportionate to the size of liner
- Offered in GripGel or High Density Gel
- Offered in 3mm and 6mm uniform thicknesses
- 12 month warranty

Part number:

SPFR-XX-3 Superior Performance Cushion Liner, 3mm
SPFR-XX-6 Superior Performance Cushion Liner, 6mm
 XX indicates size, see sizing chart and illustrations for details

Sizing chart
 measurements taken 6cm from the distal end

Measured Size (cm)	3mm	6mm
16-19cm	SPFR16-3	SPFR16-6
20-23cm	SPFR20-3	SPFR20-6
24-25cm	SPFR24-3	SPFR24-6
26-27cm	SPFR26-3	SPFR26-6
28-31cm	SPFR28-3	SPFR28-6
32-37cm	SPFR32-3	SPFR32-6
38-43cm	SPFR38-3	SPFR38-6
44-53cm	SPFR44-3	SPFR44-6

*Please refer the the Alps website for further details.

Gel Liners

Alps Superior Performance Locking Liner High Density SPDTHD



- Black High Performance Fabric for less stretch
- Wider distal end for ease of donning
- Distal ends proportionate to the size of liner
- Offered in GripGel or High Density Gel
- Offered in 3mm and 6mm uniform thicknesses
- 12 month warranty

Part number:

SPDTHD-XX-3 Superior Performance Locking Liner High Density, 3mm
SPDTHD-XX-6 Superior Performance Locking Liner High Density, 6mm
 XX indicates size, see sizing chart and illustrations for details

Sizing chart measurements taken 6cm from the distal end

Measured Size (cm)	3mm	6mm
16-19cm	SPDTHD16-3	SPDTHD16-6
20-23cm	SPDTHD20-3	SPDTHD20-6
24-25cm	SPDTHD24-3	SPDTHD24-6
26-27cm	SPDTHD26-3	SPDTHD26-6
28-31cm	SPDTHD28-3	SPDTHD28-6
32-37cm	SPDTHD32-3	SPDTHD32-6
38-43cm	SPDTHD38-3	SPDTHD38-6
44-53cm	SPDTHD44-3	SPDTHD44-6

*Please refer the the Alps website for further details.

Alps Superior Performance Cushion Liner High Density SPFRHD



- Black High Performance Fabric for less stretch
- Wider distal end for ease of donning
- Distal ends proportionate to the size of liner
- Offered in GripGel or High Density Gel
- Offered in 3mm and 6mm uniform thicknesses
- 12 month warranty

Part number:

SPFRHD-XX-3 Superior Performance Cushion Liner High Density, 3mm
SPFRHD-XX-6 Superior Performance Cushion Liner High Density, 6mm
 XX indicates size, see sizing chart and illustrations for details

Sizing chart measurements taken 6cm from the distal end

Measured Size (cm)	3mm	6mm
16-19cm	SPFRHD16-3	SPFRHD16-6
20-23cm	SPFRHD20-3	SPFRHD20-6
24-25cm	SPFRHD24-3	SPFRHD24-6
26-27cm	SPFRHD26-3	SPFRHD26-6
28-31cm	SPFRHD28-3	SPFRHD28-6
32-37cm	SPFRHD32-3	SPFRHD32-6
38-43cm	SPFRHD38-3	SPFRHD38-6
44-53cm	SPFRHD44-3	SPFRHD44-6

*Please refer the the Alps website for further details.

Gel Liners

Alps Anterior Posterior Tapered Locking Liner - APDT

Alps Anterior Posterior Tapered Cushion Liner - APFR



- Tapered - 6mm Anterior to 3mm Posterior
- Reduces bunching in the popliteal region
- High performance black fabric
- 12 month warranty

- Tapered - 6mm Anterior to 3mm Posterior*
- Reduces bunching in the popliteal region
- High performance black fabric
- 12 month warranty

Part number:

APDT-XX-TP Anterior Posterior Tapered Locking Liner
XX indicates size, see sizing chart and illustrations for details

Part number:

APFR-XX-TP Anterior Posterior Tapered Cushion Liner
XX indicates size, see sizing chart and illustrations for details

Sizing chart measurements taken 6cm from the distal end

Measured Size (cm)	3mm
20-23cm	APDT20-TP
24-25cm	APDT24-TP
26-27cm	APDT26-TP
28-31cm	APDT28-TP
32-37cm	APDT32-TP

Sizing chart measurements taken 6cm from the distal end

Measured Size (cm)	3mm
20-23cm	APFR20-TP
24-25cm	APFR24-TP
26-27cm	APFR26-TP
28-31cm	APFR28-TP
32-37cm	APFR32-TP

*Please refer the the Alps website for further details.

*Please refer the the Alps website for further details.

Gel Liners

Alps Easyliner™ Locking Liner – ELDT



- Excellent redistribution of forces will soothe the skin
- New high performance fabric created to resolve delamination and bleed through of the gel
- Available in three different configurations: 3mm, 6mm and 6-3mm tapered*
- Easy for patients to don and doff
- Superior elongation
- Offered as both a locking and cushion liner
- 12 month warranty

Part number:

ELDT-XX-3 Easyliner™ locking liner, 3mm uniform
ELDT-XX-6 Easyliner™ locking liner, 6mm uniform
ELDT-XX-6/3 Easyliner™ locking liner, 6-3mm tapered

XX indicates size, see sizing chart and illustrations for details

Sizing chart measurements taken 6cm from the distal end

Measured			
Size (cm)	3mm	6mm	6 to 3mm
Description	Uniform	Uniform	Tapered
16-19cm	ELDT-16-3	ELDT-16-6	ELDT-16-6/3
20-23cm	ELDT-20-3	ELDT-20-6	ELDT-20-6/3
24-25cm	ELDT-24-3	ELDT-24-6	ELDT-24-6/3
26-27cm	ELDT-26-3	ELDT-26-6	ELDT-26-6/3
28-31cm	ELDT-28-3	ELDT-28-6	ELDT-28-6/3
32-35cm	ELDT-32-3	ELDT-32-6	ELDT-32-6/3
36-44cm	ELDT-38-3	ELDT-38-6	ELDT-38-6/3
43-53cm	ELDT-44-3	ELDT-44-6	ELDT-44-6/3

*Please refer the the Alps website for further details.

Alps Easyliner™ Non-Locking Liner - ELFR



- Excellent redistribution of forces will soothe the skin
- New high performance fabric created to resolve delamination and bleed through of the gel
- Available in three different configurations: 3mm, 6mm and 6-3mm tapered*
- Easy for patients to don and doff
- Superior elongation
- Offered as both a locking and cushion liner
- 12 month warranty

Part number:

ELFRXX-3 Easyliner™ cushion, 3mm uniform
ELFRXX-6 Easyliner™ cushion, 6mm uniform
ELFRXX-6/3 Easyliner™ cushion, 6-3mm tapered

XX indicates size, see sizing chart and illustrations for details

Sizing chart measurements taken 6cm from the distal end

Measured			
Size (cm)	3mm	6mm	6 to 3mm
Description	Uniform	Uniform	Tapered
16-19cm	ELFR16-3	ELFR16-6	ELFR16-6/3
20-23cm	ELFR20-3	ELFR20-6	ELFR20-6/3
24-25cm	ELFR24-3	ELFR24-6	ELFR24-6/3
26-27cm	ELFR26-3	ELFR26-6	ELFR26-6/3
28-31cm	ELFR28-3	ELFR28-6	ELFR28-6/3
32-35cm	ELFR32-3	ELFR32-6	ELFR32-6/3
36-42cm	ELFR38-3	ELFR38-6	ELFR38-6/3
43-53cm	ELFR44-3	ELFR44-6	ELFR44-6/3

*Please refer the the Alps website for further details.

Gel Liners

Alps EZ Flex Locking Liner - EZF



The EZ Flex Liner is a gel liner that uses a clever combination of variable stretch fabrics anterior and posterior to the knee. In front the fabric stretches to allow minimal restriction to knee flexion whereas the fabric behind the knee minimises stretching to avoid bunching of the liner.

- Enhanced knee comfort
- Increased freedom of movement
- Increased distal circumference eases donning
- 3mm or 6mm thickness options
- 12 month warranty

Part number:

EZFX-3 Flex Locking Liner, 3mm uniform
EZFX-6 Flex Locking Liner, 6mm uniform
 XX indicates size, see sizing chart and illustrations for details

Sizing chart measurements taken 6cm from the distal end		
Measured Size (cm)	3mm	6mm
Description	Uniform Locking	Uniform Locking
16-19cm	EZF16-3	EZF16-6
20-23cm	EZF20-3	EZF20-6
24-25cm	EZF24-3	EZF24-6
26-27cm	EZF26-3	EZF26-6
28-31cm	EZF28-3	EZF28-6
32-37cm	EZF32-3	EZF32-6
38-43cm	EZF38-3	EZF38-6
44-53cm	EZF44-3	EZF44-6

*Please refer the the Alps website for further details.

Alps General Purpose Liner - GPDT/GPFR



The unparalleled combination of softness and elasticity of the ALPS EasyGel provides the comfort and durability users expect.

- New distal end encapsulation retrofits most competitors' liners
- High performance fabric improves durability
- Slightly tacky feel reduces bunching in the popliteal region
- Available in two different configurations: 3mm uniform and 6mm uniform
- 12 month warranty

Part number:

GPDTXX-3 Locking Liner, 3mm uniform
GPDTXX-6 Locking Liner, 6mm uniform
GPFRXX-3 Cushion Liner, 3mm uniform
GPFRXX-6 Cushion Liner, 6mm uniform
 XX indicates size, see sizing chart and illustrations for details

Sizing chart measurements taken 6cm from the distal end				
Measured Size (cm)	3mm	6mm	3mm	6mm
Description	Uniform Locking	Uniform Locking	Uniform Cushion	Uniform Cushion
16-19cm	GPDT16-3	GPDT16-6	GPFR16-3	GPFR16-6
20-23cm	GPDT20-3	GPDT20-6	GPFR20-3	GPFR20-6
24-25cm	GPDT24-3	GPDT24-6	GPFR24-3	GPFR24-6
26-27cm	GPDT26-3	GPDT26-6	GPFR26-3	GPFR26-6
28-31cm	GPDT28-3	GPDT28-6	GPFR28-3	GPFR28-6
32-37cm	GPDT32-3	GPDT32-6	GPFR32-3	GPFR32-6
38-43cm	GPDT38-3	GPDT38-6	GPFR38-3	GPFR38-6
44-53 cm	GPDT44-3	GPDT44-6	GPFR44-3	GPFR44-6

*Please refer the the Alps website for further details.

Gel Liners

Alps Extreme Liner - AKDT/AKFR



The ALPS Liner is engineered with similar properties as the Easygel but has been formulated with the GripGel to assist in donning and suspension. Specifically designed for transfemoral and active transtibial amputees. ALPS Liner has 80% less longitudinal stretch than ALPS other gel liners, which provides more control and stability.

- Minimises compression and irritation proximally
- Freedom of movement through knee flexion
- Takes advantage of vacuum suspension to provide security
- High performance fabric to improve durability
- Longer lengths to accommodate more users
- Offered as both a locking and cushion liner
- Durable
- 12 month warranty

Part number:

- AKDT-XX-3** Locking Liner, 3mm uniform
- AKDT-XX-6** Locking Liner, 6mm uniform
- AKFR-XX-3** Cushion Liner, 3mm uniform
- AKFR-XX-6** Cushion Liner, 6mm uniform

XX indicates size, see sizing chart and illustrations for details

Sizing chart measurements taken 6cm from the distal end

Measured Size (cm)	3mm Uniform	6mm Uniform	3mm Uniform	6mm Uniform
Description	Uniform	Uniform	Uniform	Uniform
16-19cm	AKDT16-3	AKDT16-6	AKFR16-3	AKFR16-6
20-23cm	AKDT20-3	AKDT20-6	AKFR20-3	AKFR20-6
24-25cm	AKDT24-3	AKDT24-6	AKFR24-3	AKFR24-6
26-27cm	AKDT26-3	AKDT26-6	AKFR26-3	AKFR26-6
28-31cm	AKDT28-3	AKDT28-6	AKFR28-3	AKFR28-6
32-37cm	AKDT32-3	AKDT32-6	AKFR32-3	AKFR32-6
38-43cm	AKDT38-3	AKDT38-6	AKFR38-3	AKFR38-6
44-53cm	AKDT44-3	AKDT44-6	AKFR44-3	AKFR44-6

*Please refer the the Alps website for further details.

Alps Extreme Liner High Density - AKDTHD



- Limited longitudinal stretch reduces movement of redundant tissue
- High circumferential stretch to assist with form fitting
- Wider distal end for ease of donning
- Offered as both a locking and cushion liner
- Offered with GripGel or High Density Gel
- Distal ends are proportionate to the size of the liner
- Available in two different thicknesses: 3mm uniform, 6 mm uniform
- 12 month warranty

Part number:

- AKDTHD-XX-3** Extreme Locking Liner High Density, 3mm
- AKDTHD-XX-6** Extreme Locking Liner High Density, 6mm

XX indicates size, see sizing chart and illustrations for details

Sizing chart measurements taken 6cm from the distal end

Measured Size (cm)	3mm	6mm
16-19cm	AKDTHD16-3	AKDTHD16-6
20-23cm	AKDTHD20-3	AKDTHD20-6
24-25cm	AKDTHD24-3	AKDTHD24-6
26-27cm	AKDTHD26-3	AKDTHD26-6
28-31cm	AKDTHD28-3	AKDTHD28-6
32-37cm	AKDTHD32-3	AKDTHD32-6
38-43cm	AKDTHD38-3	AKDTHD38-6
44-53cm	AKDTHD44-3	AKDTHD44-6

*Please refer the the Alps website for further details.

Gel Liners

Alps Easyliner™ Super Stretch - ELPX



- Excellent redistribution of forces will soothe the skin
- Unrestricted stretch to maintain optimum circulation
- Custom fit without the cost or inconvenience
- Durable
- Can fit some users with Symes amputations
- Longer lengths to accommodate more users
- 6 month warranty

Part number:

ELPXXX Easyliner™ Super Stretch, 6mm uniform
XX indicates size, see sizing chart and illustrations for details

Sizing chart measurements taken 6cm from the distal end

Measured Size (cm)	ELPX
Description	Uniform
10-15cm	ELPX10
16-19cm	ELPX16
20-23cm	ELPX20
24-25cm	ELPX24
26-27cm	ELPX26
28-31cm	ELPX28
32-37cm	ELPX32

*Please refer the the Alps website for further details.

Alps Thermoliner™ Locking Liner - TFDT



- Works in conjunction with valve suction socket systems
- Presents solution for virtually any type of patient
- Gel durometer and contour provide additional control and support
- Durability
- Offered in either 3mm or 6mm uniform thicknesses
- Able to be donned like a sock
- EasyGel durometer and contour provide maximum comfort and support
- 12 month warranty

Part number:

TFDTXX-3 Thermoliner™ Locking Liner 3mm
TFDTXX-6 Thermoliner™ Locking Liner 6mm
XX indicates size, see sizing chart and illustrations for details

Sizing chart measurements taken 6cm from the distal end

Measured Size (cm)	3mm soft	6mm soft
Description	Uniform	Uniform
16-19cm	TFDT16-3	TFDT16-6
20-23cm	TFDT20-3	TFDT20-6
24-25cm	TFDT24-3	TFDT24-6
26-27cm	TFDT26-3	TFDT26-6
28-31cm	TFDT28-3	TFDT28-6
32-37cm	TFDT32-3	TFDT32-6
38-43cm	TFDT38-3	TFDT38-6
44-53cm	TFDT44-3	TFDT44-6

*Please refer the the Alps website for further details.

Gel Liners

Alps Thermoliner™ Non-Locking Liner - TFFR



- Works in conjunction with valve suction socket systems
- Presents solution for virtually any type of patient
- Durability
- Offered in either 3mm or 6mm uniform thicknesses
- Able to be donned like a sock
- EasyGel durometer and contour provide maximum comfort and support
- 12 month warranty

Part number:

TFFR-XX-3 Thermoliner™ Cushion Liner 3mm

TFFR-XX-6 Thermoliner™ Cushion Liner 6mm

XX indicates size, see sizing chart and illustrations for details

Sizing chart

measurements taken 6cm from the distal end

Measured Size (cm)	3mm soft	6mm soft
Description	Uniform	Uniform
16-19cm	TFFR-16-3	TFFR-16-6
20-23cm	TFFR-20-3	TFFR-20-6
24-25cm	TFFR-24-3	TFFR-24-6
26-27cm	TFFR-26-3	TFFR-26-6
28-31cm	TFFR-28-3	TFFR-28-6
32-37cm	TFFR-32-3	TFFR-32-6
38-43cm	TFFR-38-3	TFFR-38-6
44-53cm	TFFR-44-3	TFFR-44-6

*Please refer the the Alps website for further details.

Alps ECO Gel Liner - ECDTHD/ ECFRHD



- New Distal Construction with reduced stretch to control distal distraction
- Available in HD Gel as standard
- Available in a Locking or Cushion Liner
- Available in 3mm and 6mm uniform thickness
- 12 month warranty

Part number:

ECDTHD-XX-3 Eco Locking Liner, 3mm uniform

ECDTHD-XX-6 Eco Locking Liner, 6mm uniform

ECFRHD-XX-3 Eco Cushion Liner, 3mm uniform

ECFRHD-XX-6 Eco Cushion Liner, 6mm uniform

XX indicates size, see sizing chart and illustrations for details

Sizing chart

measurements taken 6cm from the distal end

Measured Size (cm)	3mm	6mm	3mm	6mm
Description	Uniform	Uniform	Uniform	Uniform
	Locking	Locking	Cushion	Cushion
20-23cm	ECDTHD-20-3	ECDTHD-20-6	ECFRHD-20-3	ECFRHD-20-6
24-25cm	ECDTHD-24-3	ECDTHD-24-6	ECFRHD-24-3	ECFRHD-24-6
26-27cm	ECDTHD-26-3	ECDTHD-26-6	ECFRHD-26-3	ECFRHD-26-6
28-31cm	ECDTHD-28-3	ECDTHD-28-6	ECFRHD-28-3	ECFRHD-28-6
32-37cm	ECDTHD-32-3	ECDTHD-32-6	ECFRHD-32-3	ECFRHD-32-6

*Please refer the the Alps website for further details.

Gel Suspension Sleeves

Alps Valve Integrated Vacuum Activated - VIVA



- Built-in valve to evacuate the air in the socket
- Minimises compression and irritation proximally
- Freedom of movement through knee flexion
- Takes advantage of vacuum suspension to provide security
- Durable
- Available in 6mm and 3mm thickness
- 90 day warranty

Part number:

VIVA-XX-3 VIVA Sleeve, 3mm thick

VIVA-XX-6 VIVA Sleeve, 6mm thick

XX indicates size, see sizing chart and illustrations for details

Sizing chart measurements taken 10cm above patella		
Measured Size (cm)	3mm	6mm
Description	Uniform	Uniform
20-24cm	VIVA-16-3	VIVA-16-6
25-30cm	VIVA-20-3	VIVA-20-6
31-34cm	VIVA-24-3	VIVA-24-6
35-37cm	VIVA-26-3	VIVA-26-6
38-40cm	VIVA-28-3	VIVA-28-6
41-45cm	VIVA-32-3	VIVA-32-6

*Please refer the the Alps website for further details.

Alps EasySleeve™ Fabric Reinforced-SFR



- Minimises compression and irritation proximally
- Freedom of movement through knee flexion
- Takes advantage of vacuum suspension to provide security
- High performance fabric to improve durability
- Longer lengths to accommodate more users
- Durable
- 90 day warranty

Part number:

SFR-XX-3 EasySleeve™ Fabric Reinforced, 3mm thick

SFR-XX-6 EasySleeve™ Fabric Reinforced, 6mm thick

XX indicates size, see sizing chart and illustrations for details

Sizing chart measurements taken 10cm above patella		
Measured Size (cm)	3mm	6mm
Description	Uniform	Uniform
16-19cm	SFR-10-3	SFR-10-6
20-24cm	SFR-16-3	SFR-16-6
25-30cm	SFR-20-3	SFR-20-6
31-34cm	SFR-24-3	SFR-24-6
35-37cm	SFR-26-3	SFR-26-6
38-40cm	SFR-28-3	SFR-28-6
41-45cm	SFR-32-3	SFR-32-6
46-60cm	SFR-38-3	SFR-38-6
61-70cm	SFR-44-3	SFR-44-6

*Please refer the the Alps website for further details.

Gel Suspension Sleeves

Alps EasySleeve™ Fabric Reinforced – SFS



- Alps Grip Gel for secure suspension
- Superior comfort
- Complete freedom of movement
- High performance fabric improves durability
- Available in 3mm or 6mm uniform thickness
- 90 day warranty

Part number:

SFSXX-3 EasySleeve™ Fabric Reinforced 3mm uniform
SFSXX-6 EasySleeve™ Fabric Reinforced 6mm uniform
 XX indicates size, see sizing chart and illustrations for details

Sizing chart measurements taken 10cm above patella

Measured Size (cm)	3mm	6mm
Description	Uniform	Uniform
20-24cm	SFS16-3	SFS16-6
25-30cm	SFS20-3	SFS20-6
31-34cm	SFS24-3	SFS24-6
35-37cm	SFS26-3	SFS26-6
38-40cm	SFS28-3	SFS28-6
41-45cm	SFS32-3	SFS32-6
46-60cm	SFS38-3	SFS38-6
61-70cm	SFS44-3	SFS44-6

*Please refer the the Alps website for further details.

Alps Suspension Sleeve - SFB



- 2mm uniform thickness
- Alps Grip Gel for secure suspension
- Available in black
- 90 day warranty

Part number:

SFBXX-2 Suspension Sleeve
 XX indicates size, see sizing chart and illustrations for details

Sizing chart measurements taken 10cm above patella

Measured Size (cm)	Part Number
25-30cm	SFB20-2
31-34cm	SFB24-2
35-37cm	SFB26-2
38-40cm	SFB28-2
41-45cm	SFB32-2

*Please refer the the Alps website for further details.

Gel Suspension Sleeves

Alps Flex Sleeve - SFX



- Features a 30° pre-flexion
- HD Gel provides active amputees a great degree of control
- Available in 3mm uniform thickness
- Available in one length that accommodates most users
- 3 month warranty

Part number:

SFXXX -3G Flex Sleeve – SFX, 3mm

XX indicates size, see sizing chart and illustrations for details

Sizing chart measurements taken 6cm from the distal end

Measured Size (cm)	3mm
SIZE 20-24cm	SFX20-3G
SIZE 31-40cm	SFX26-3G
SIZE 35-60cm	SFX32-3G

*Please refer the the Alps website for further details.

Alps Extreme Sleeve Fabric Reinforced - SFK



ALPS Extreme Sleeve Fabric Reinforced has superior comfort provided by ALPS Gel. The SFK has limited vertical stretch, and the elasticity of the fabric still allows the user excellent freedom of knee flexion.

The Extreme sleeve also achieves secure suspension by sealing with the skin without restricting circulation, while the Gel sticks to the patient's skin without causing shear forces.

Here are a few of the built-in features that you will find in the Extreme Sleeve from ALPS:

- Limited longitudinal stretch
- Durable
- Available in 6mm and 3mm uniform thickness
- 90 day warranty

Part number:

SFK-XX-3 Extreme Sleeve Fabric Reinforced, 3mm uniform

SFK-XX-6 Extreme Sleeve Fabric Reinforced, 6mm uniform

XX indicates size, see sizing chart and illustrations for details

Sizing chart measurements taken 10cm above patella

Measured Size (cm)	6mm	
	Uniform	Uniform
20-24cm	SFK-16-3	SFK-16-6
25-30cm	SFK-20-3	SFK-20-6
31-34cm	SFK-24-3	SFK-24-6
35-37cm	SFK-26-3	SFK-26-6
38-40cm	SFK-28-3	SFK-28-6
41-45cm	SFK-32-3	SFK-32-6
46-60cm	SFK-38-3	SFK-38-6
61-70cm	SFK-44-3	SFK-44-6

*Please refer the the Alps website for further details.

Silicone Suspension Sleeves

Alps EasySleeve™ Super Stretch - SLE



- Complete freedom of movement
- No pressure against the patella throughout knee flexion
- Takes advantage of vacuum suspension to provide security
- Minimises compression and irritation proximally
- Separate fabric cover keeps dirt and clothes away from gel
- Longer lengths to accommodate more users
- Durable
- Available in 6mm thickness
- 90 day warranty

Part number:

SLE-XX EasySleeve™ Super Stretch - SLE 6mm uniform
CSLE-XX cover for use with SLE

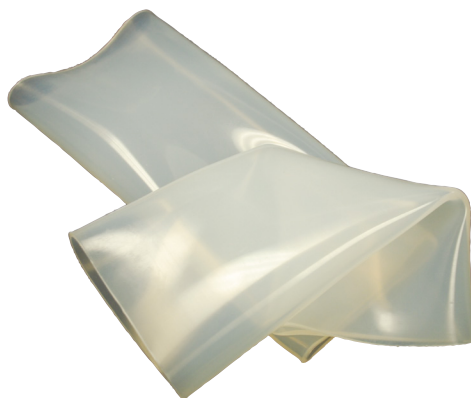
XX indicates size, see sizing chart and illustrations for details

Sizing chart measurements taken 10cm above patella

Measured Size (cm)	6mm	Lycra cover®
Description	Uniform	Uniform
10-15cm	SLE-10	-
16-19cm	SLE-16	CSLE-16
20-23cm	SLE-20	CSLE-20
24-25cm	SLE-24	CSLE-24
28-31cm	SLE-28	CSLE-28
32-37cm	SLE-32	CSLE-32

*Please refer the the Alps website for further details.

Alps Clearline Sleeve - SLR



- One piece silicone sleeve
- Suitable for transtibial suction sockets
- No fabric cover to restrict movement
- Easily cleaned
- 90 day warranty

Part number:

SLR-XX Reinforced Clearline Sleeve Beige

SLR-XX-BLACK Reinforced Clearline Sleeve Black

XX indicates size, see sizing chart and illustrations for details

Sizing chart measurements taken 10cm above patella

Measured Size (cm)	SLR
Description	Uniform
28-32cm	SLR-S or SLR-S-BLACK
33-34cm	SLR-M or SLR-M BLACK
35-37cm	SLR-L or SLR-L-BLACK
38-40cm	SLR-XL or SLR-XL-BLACK
41-45cm	SLR-XXL or SLR-XXL-BLACK
46-51cm	SLR-3XL or SLR-3XL-BLACK
52-57cm	SLR-4XL
58-64cm	SLR-5XL

*Please refer the the Alps website for further details.

Other Suspension Sleeves

Endolite TT Suspension Sleeves



- Neoprene sleeves for trans-tibial proximal suspension
- Robust covers provide excellent security
- Range of sizes available
- 90 day warranty

Part number:

029071 - 029078 Trans-tibial Suspension Sleeves

Sizing chart
measurements taken from thigh circumference

Number	Size	Thigh circumference
029071	1	240mm - 275mm
029072	2	265mm - 305mm
029073	3	290mm - 330mm
029074	4	320mm - 360mm
029075	5	350mm - 400mm
029076	6	385mm - 440mm
029077	7	425mm - 485mm
029078	8	465mm - 530mm

Endolite 3D Knitted Sleeve



The suspension sleeve, designed using scanned human skeletal information, incorporates a series of knitting properties that allow variable stretch and compression zones to promote suspension and increase comfort. Added flexibility anterior to the knee allows unrestrained flexion, compressed profile posterior to the knee minimises discomfort. The suspension sleeve is also designed to be thinner posteriorly to minimise bunching and aid cooling.

Benefits

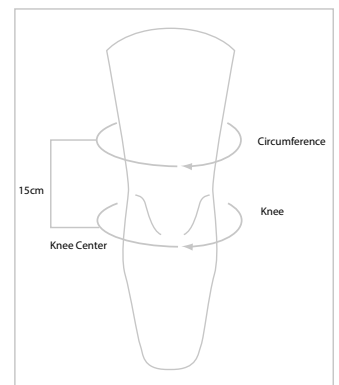
- Snug fit with comfortable knee flexion
- Stay-put strips retain sleeve and reduce pistoning
- 3D knit fits underlying anatomy
- No fabric bunching behind knee
- No compression line at proximal edge
- Excellent suspension
- Machine washable
- 1 month warranty

Features

- Stretch and compression zones
- Reinforced silicone stay-put strips
- 3D knit varies properties to suit the joint function
- Compression transition zone at proximal edge
- Hypo-allergenic elastomeric yarns
- Pre-flexed design

Part number:

3DSST4 - 3D SLEEVE SIZE 4
3DSST5 - 3D SLEEVE SIZE 5
3DSST6 - 3D SLEEVE SIZE 6



Size	4	5	6
Circumference 15cm above KC	38	39.5	41
Circumference at KC	31	32.5	34

Valves and Accessories

Part number:
Socket Connection Kit*
409663

*For Echelon VAC only



Check Valve Service Kit
409863

*For Echelon VAC only



Valve Block Assembly*
409763

*For Echelon VAC only



Lyn Valve BK2
929052



Threaded Housing
929053



Vac Barb 90° swivel
929055



One-way check valve
929054



In-line filter
929051



Vacuum tubing 1m length
905464



Lyn Valve® RV Kit - Auto Expulsion
PA0002



Lyn Valve® RV Manual Expulsion - Kit
PA0300



Lyn Valve® RV Slide
PA0400



Endolite Socket Lock



- A robust socket lock for silicone and gel liners
- Ratchet operation provides audible feedback for amputee
- Can be laminated or thermoformed into position

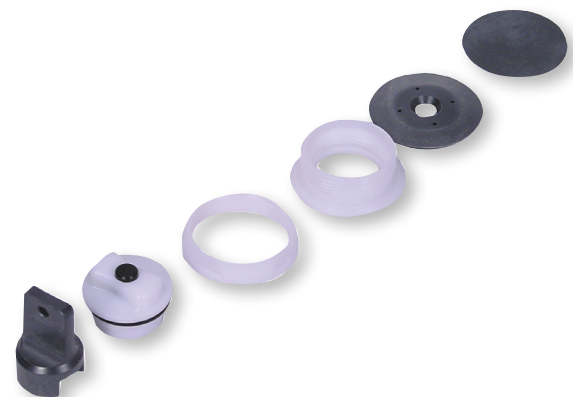
Part number:

109108 Socket Lock

109308 M10 Lock Rod Assembly

109408 1/4" UNC Lock Rod Assembly

Endolite Socket Valves



Part number:

Trans-femoral Suction Socket Valve Kit:

099132 standard 19mm dia. orifice

099134 large 24mm dia. orifice

Trans-femoral, Flexible Socket Valve Kit:

099135 large 24mm dia. orifice

Accessories

Alps PadSil Silicone Distal Pads - PDS



- Soft medical grade silicone
- Durable
- Keeps shape over time
- 5 different sizes
- Helps maintain total contact
- Can be modified

Part number:

PDS-XX Silicone Distal Pads

XX indicates size, see sizing chart and illustrations for details

Sizing chart
measurements taken 6cm from the distal end

Measured Size (cm)	PadSil
Description	Uniform
14-19cm	PDS-18
20-23cm	PDS-22
24-27cm	PDS-26
28-31cm	PDS-30
32-35cm	PDS-34

Skincare

Alps Skin Lotion



Alps 100% Silicone Skin Lotion helps to sooth dry, sensitive skin. Hypoallergenic, with no perfumes or dyes, ALPS Skin Lotion leaves no oily feeling and can be used sparingly to relieve dry, chapped skin conditions.

Active Ingredients: Silicone

ALPS Skin Lotion is available in 4oz. (SL108) and 32oz. (SL108-32) bottles.

Recommended for use with:

Gel (thermoplastic) – Easyliner™

Silicone – ClearPro™

Urethane

Part number: SL108 (4oz)
SL108-32 (32oz)

Skincare

Alps Prosthetic Lubricant



Alps Prosthetic Lubricant is used to help in donning silicone prosthetic liners. It eliminates the sticky feel and allows the patient to roll up the liner more easily.

Active Ingredients: Silicone, 70% isopropyl alcohol
ALPS Prosthetic Lubricant in a 16oz bottle.

Recommended for use with:

Gel* (thermoplastic) – Easyliner™

Silicone – ClearPro™

Urethane

* may deteriorate gel over time

Part number: PA604

Alps Prosthetic Cleanser



Alps Prosthetic Cleaner is a non-alkaline, soap-free cleanser which can be used for either hand or machine washing of prosthetic liners or sleeves. Patients with sensitive skin may also find that this soothing cleansing agent is ideal for washing skin areas that come into contact with the prosthesis

Alps Prosthetic Cleaner is available in a 100ml bottle

Recommended for use with:

Gel (thermoplastic) - Easyliner™

Silicone - ClearPro™

Urethane

Part number: PD595

Global Warranty Statement

Chas. A. Blatchford & Sons Limited and Subsidiaries (Blatchford) warrants Endolite Prosthetic Products against defects in material and workmanship.

The warranty period applies from the original date of product shipment unless otherwise specified.

In the event that a defect is discovered during the warranty period, Blatchford will, at its discretion, either repair or replace the affected part with another part equivalent in basic function or refund the purchase price of the affected part only. The warranty of the repaired or replaced part is limited to the remaining warranty period from the original shipment date of the part.

The warranty coverage is limited to the cost of the original failed part and excludes all associated or related costs. For the sake of clarity, the phrase "all associated or related costs" includes but is not limited to associated parts, assembly and disassembly costs, transport costs, travel and handling costs and any form of compensation.

The warranty policy excludes failure resulting from misuse, accidental damage, neglect, wear and tear, unapproved component modifications, incorrect assembly and unless otherwise specified, immersion in water. Specific limitation of use as detailed in the documentation supplied with the product must be complied with.

Blatchford makes no other express warranty or condition, whether written or oral to the extent allowed by local law, any implied warranty or condition of merchantability, satisfactory quality, or fitness for a particular purpose is hereby disclaimed. Some countries/regions, states, or provinces do not allow limitations on the duration of an implied warranty, so the above disclaimer may not apply to you. This warranty gives you specific legal rights, and you may also have other rights that vary from country/region to country/region, state to state, or province to province.

To the extent allowed by local law, the remedies in this warranty statement are your sole and exclusive remedies. except as indicated above, in no event will Blatchford or its suppliers be liable for direct, special, incidental, consequential, or other damage, whether based in contract, tort, or otherwise. Some countries/regions, states, and provinces do not allow the exclusion of incidental or consequential damages, so the above limitations and exclusions may not apply to you.

If the product comes with a Warranty Registration Form then this must be completed and returned to the company for the warranty to be effective.

To qualify for warranty the Warranty Claim Form must be fully completed and supplied with the affected part.

To return any product, please contact our Customer Services department to inform of the reason for return and to request an ACS number for the return.

Please be aware our Warranty Statement is subject to change; in all cases our current Warranty Statement is published on our website.

All items within this catalogue are  marked unless otherwise specified.

Follow Blatchford: | blatchford.co.uk
@BlatchfordGrp | +44 (0) 1256 316600
/BlatchfordGrp | customer.service@blatchford.co.uk

Registered address, Chas A Blatchford & Sons Ltd, Unit D, Antura,
Kingsland Business Park, Basingstoke, RG24 8PZ, United Kingdom.

M00428 Iss6 10/18. Information correct at time of print.

